

TRANSPENNINE ROUTE

UPGRADE



Network Rail TRU Communications Update

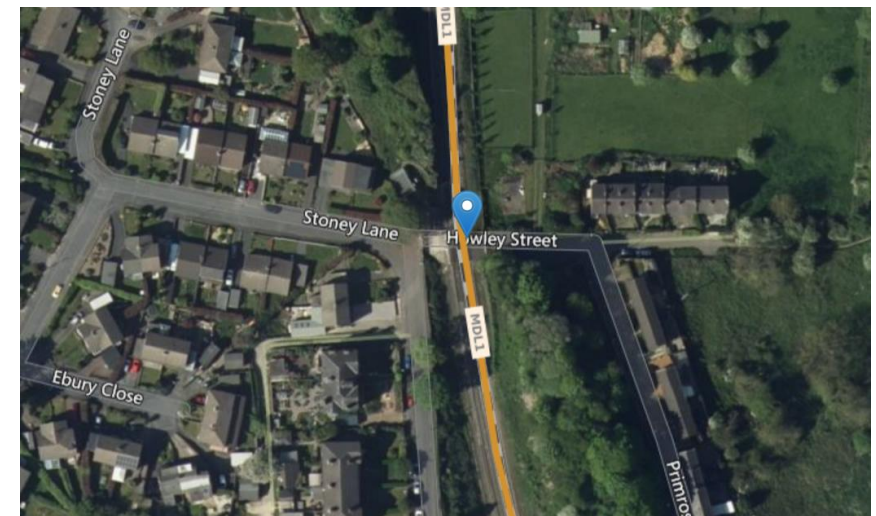
Lady Anne Level Crossing

April 2022



Lady Anne Level Crossing Overview

- Lady Anne Level Crossing is a public footpath crossing in Batley between Leeds and Huddersfield.
- The level crossing crosses two tracks and there is currently a signaller in place to grant residents access to cross the railway.
- Upon completion of the Transpennine Route Upgrade, this section of the railway will be fully electrified with increased line speed and services.
- From Summer 2023, the signalling that is currently operated from the signal box at the level crossing will be taken over by the York Rail Operating Centre. Therefore, there will be no signaller situated at the crossing to operate it.
- Our priority is the safety of the community, and the upgrades mentioned above will significantly increase the risk of using the existing level crossing. We are therefore proposing to close the crossing and install a footbridge as a safer means of crossing the upgraded railway in this area.



Date	Activity
Summer 20	<ul style="list-style-type: none"> We presented two replacement bridge options to residents for Lady Anne level crossing as part of a consultation. This was carried out via post and online due to the COVID-19 pandemic not allowing us to carry out face-to-face consultation. A web page was set up on our consultation hub that had 24-hour access to the most up to date information. Key stakeholders informed of the consultation (MP & councillors).
Summer 20 – Summer 21	<ul style="list-style-type: none"> After listening to the feedback received from residents during the consultation, we redesigned the bridge to scale back the level of steel used and minimise the visual intrusion. The footbridge will be accessible via ramp as well as stairs and will work with the landscape to avoid standing out.
February 21 – June 21	<ul style="list-style-type: none"> We submitted a pre-application enquiry in Feb 2021, meeting with the council in April 2021 and then received the formal pre-application response from the council in June 2021.
Summer 21	<ul style="list-style-type: none"> We presented the new, accessible footbridge to residents via both a face-to-face and virtual information event, where residents were able to come and view our plans and ask any questions prior to us submitting the planning permission. Mailout / website update.
August 21	<ul style="list-style-type: none"> Planning application submitted to Kirklees Council.
December 21	<ul style="list-style-type: none"> Due to a request for a one-month extension on the planning application from Kirklees Council and following a meeting with Kim Leadbeater MP, we set up a face-to-face information event for January 2022 to alleviate any of the publics concerns with the new footbridge.
January 22	<ul style="list-style-type: none"> Decision to move the face-to-face event to virtual as COVID-19 cases were rising rapidly. Some residents received the invite with very little notice due to issues with postage, decision made following this to organise a further face-to-face event.
11 February 22	<ul style="list-style-type: none"> Letters sent to residents to inform them of both face-to-face and virtual information events taking place at the end of February / start of March.
28 February 22	<ul style="list-style-type: none"> Face-to-face event held at St Thomas' Church in Batley with representation from Sponsorship, Consents, Project and Communications. St Thomas' Church, Church, Grosvenor Road, Batley WF17 0LX, 4pm – 7pm, 21 attendees.
1 March 22	<ul style="list-style-type: none"> Online Teams Live event held for anybody that couldn't make the event face-to-face, 6pm - 7pm, four attendees.
March/April 22	<ul style="list-style-type: none"> Planning another information event for residents to attend following a decision on planning permission. This will provide residents with more information on the next steps and programme of work.

Resident Survey – Summer 2020

The results of a resident survey revealed that:

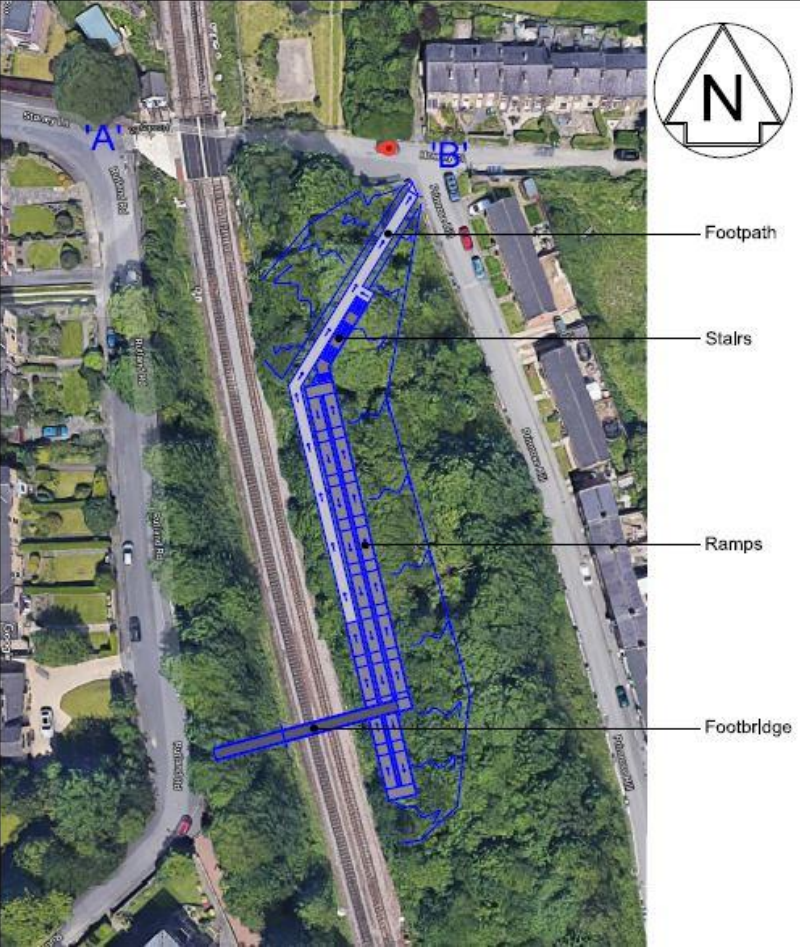
- 61% would welcome a new footbridge if the crossing was closed to allow for significant railway improvements
- 33% expressed a desire to keep the level crossing open.
- Key concerns regarding a potential new footbridge focussed on privacy, aesthetics, and accessibility issue.

Following feedback, we listened to residents and took their feedback onboard to redesign the two options presented at consultation.

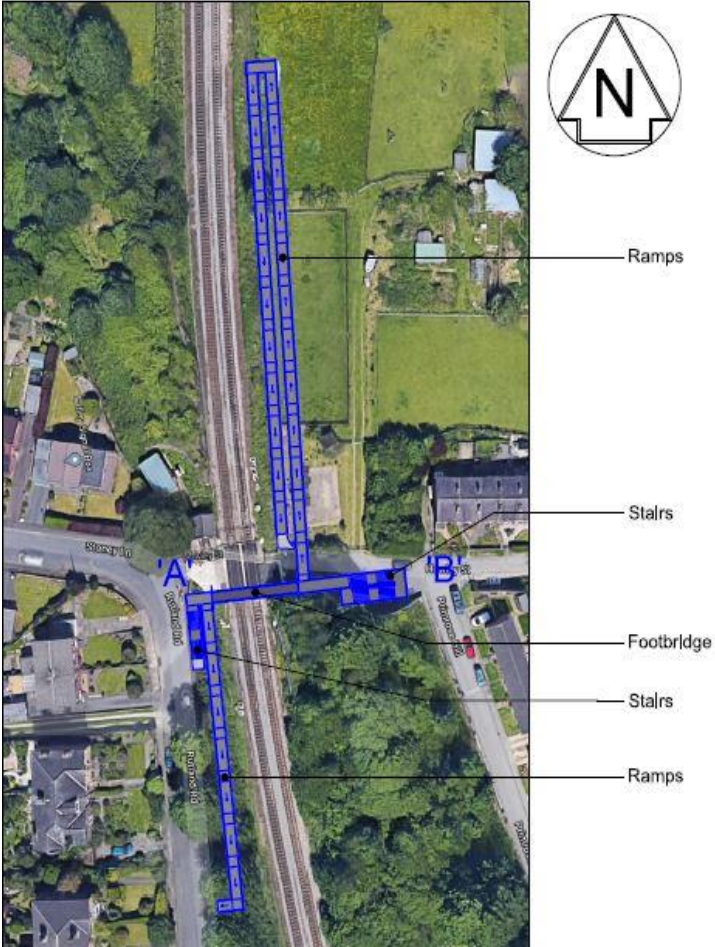
We redesigned the bridge to create a bespoke, accessible footbridge. This included scaling back the level of steel used and minimise the visual intrusion to be in keeping with the area. We also moved the structure to be sunken into the embankment as we recognise residents concerns around privacy and being overlooked.



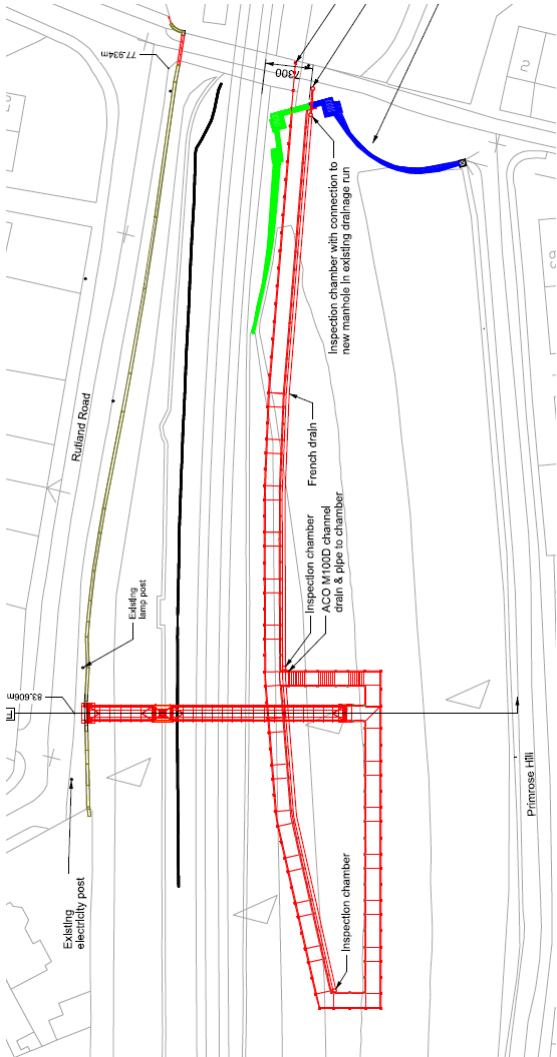
Proposed and Final Designs



Potential footbridge A



Potential footbridge B



Final Design

Communications Activity (following planning permission)

- **Public Information Events**
 - Following decision on planning permission which will include next steps, what work will be carried out and how we're going to build the footbridge. Also, an opportunity to confirm any outstanding questions from residents (e.g., lighting).
 - Further public information event after construction starts where residents can come and ask any questions.
- **Regular letters and/or postcards**
 - Keep residents informed of the stages of work and set expectations of work and noise in the area.
- **Website updates**
 - Regular updates to the Lady Anne webpage on www.theTRUpgrade.co.uk to keep residents updated and show progress photos of the work taking place and provide a programme update.
- **Political stakeholder updates**
 - Take place via email and meeting (if necessary). We will also send over any residents letters so stakeholders always have the most up to date information.
- **Community**
 - Look to go to schools in the area to talk about railway safety and the dangers of electrification (this may be more relevant for phase two in 2024).
 - Community replanting scheme following the end of the work.

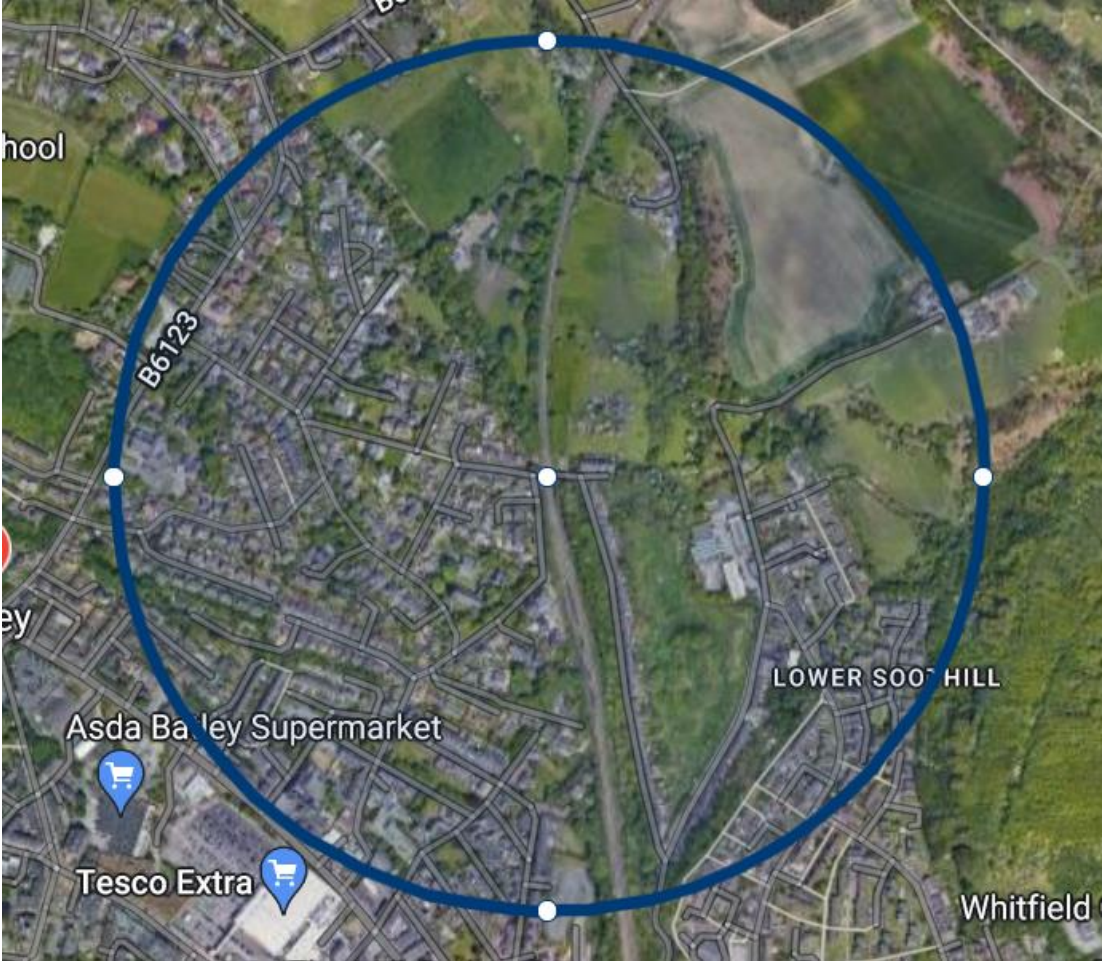
Key Stakeholders

It is important as part of the engagement for Lady Anne level crossing, we inform key stakeholders listed below to make them aware of the process and reasoning behind the engagement.

Audience	Insights / comments	Engagement
Lineside neighbours and businesses	<p>We continue to send letters to a 500m radius from Lady Anne level crossing for residents to find out more. When we start construction, this will be reduced to a 200m radius which is in line with the Network Rail standards for notification letters, unless we are piling which increases the radius to 500m (included both 200m and 500m radius on the following slide*).</p> <p>It is our priority to provide residents with timely, clear and honest communications about upcoming engagement and work, including how it will affect them.</p>	<ul style="list-style-type: none"> - Letter / postcard updates - Community events (face to face and virtual) - Website updates
Tracy Brabin – Mayor of West Yorkshire	<p>Regular email updates will be sent to Tracy Brabin following a decision on planning permission and throughout construction.</p>	<ul style="list-style-type: none"> - Email updates - Video call & face to face meetings
Leader of Kirklees Council	<p>Regular email updates will be sent to Cllr Shabir Pandor following a decision on planning permission and throughout construction.</p>	<ul style="list-style-type: none"> - Email updates - Video call & face to face meetings
Batley and Spen MP	<p>We will continue to update Kim Leadbeater to keep her updated on the progress of Lady Anne level crossing, as well as addressing any concerns from residents in the area.</p>	<ul style="list-style-type: none"> - Email updates - Video call & face to face meetings
Batley East Ward Council	<p>Regular email updates and invitations to community events to Cllr Mahmood Akhtar, Cllr Fazila Loonat and Cllr Habiban Zaman following a planning permission decision and throughout construction.</p>	<ul style="list-style-type: none"> - Email updates - Video call & face to face meetings

Letter Drop Radius*

500m Radius



200m Radius

